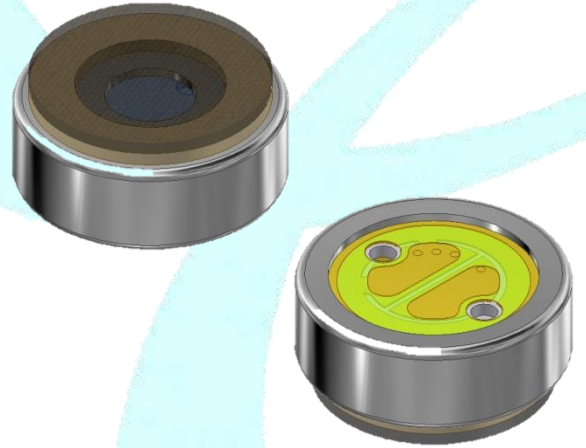


EBA-06G-L34-1

Φ6, LEAD WIRE Type

UNI-DIRECTIONAL



Best sound electronics

Value no1. Micro sound provider

Creative technology starts from respecting of life of the individuals

Creative technologies to respect human life

Best sound electronics

Value no1. Micro sound provider

We offer you happiness with our excellent technology beyond an ordinary sound what you expect

Superior technology to deliver happiness

Best sound electronics

Value no1. Micro sound provider

Keep basic fundamentals to fill sound with new innovations

Creative technologies to respect human life



1. INTRODUCTION

- Analog Electret Condenser Microphone
- Circle Type, LEAD WIRE type
- Single & Differential Mode
- Sensitivity is Typical -49dBV/Pa
- Uni-directional
- RF Shielded
- Compatible with Sn/Pb and Halogen-free solder process
- RoHS compliant

2. APPLICATIONS

- Smartphones
- Ear-sets, Bluetooth Headsets
- Tablet Computers
- Wearable Devices
- Electrical Appliances
- Voice Recognition Systems of Appliances

3. MODEL NO.

EBA-06G-L34-1

4. GENERAL MICROPHONE SPECIFICATIONS

Test Condition : 23 ± 2°C, Room Humidity = 55 ± 20 %, VCC=4.4V, unless otherwise noticed.

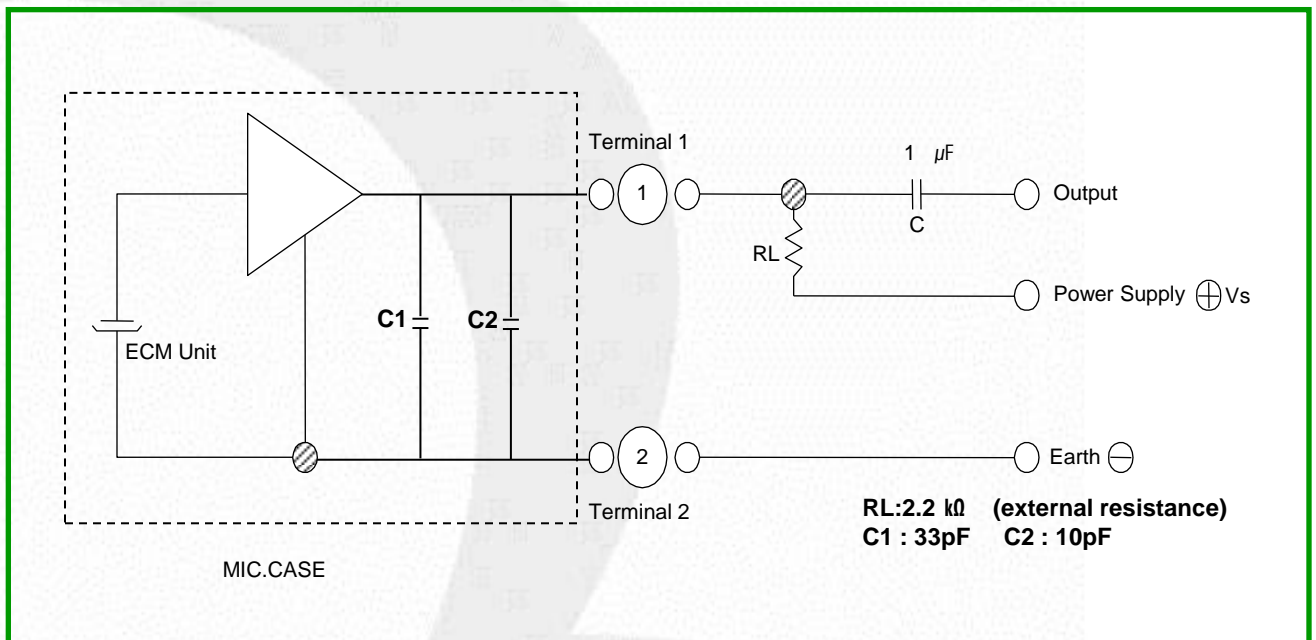
| Parameter | Conditions | Min | Typ | Max | Units |
|--|-------------------------|-------------------------|-----|-----------|-------|
| Directivity | | Omni-directional | | | |
| Operating Voltage | | 1 | - | 10 | V |
| Sensitivity Change across Voltage | ΔS-VS, VCC=4.4V to 3.0V | - | - | -3 | dB |

5. ELECTRO-ACOUSTIC CHARACTERISTICS

Test Condition : $23 \pm 2^\circ\text{C}$, Room Humidity = $55 \pm 20\%$, $V_{CC}=4.4\text{V}$, unless otherwise noticed.

| Parameter | Conditions | Min | Typ | Max | Units |
|--|--|------------|------------|------------|---------------|
| Sensitivity (S) | 94dB SPL at 1kHz, $0\text{dB}=1\text{V}/\text{Pa}$ | -52 | -49 | -46 | dBV/Pa |
| Output Impedance (Z_{out}) | 94dB SPL at 1kHz | - | 1.9 | 2.2 | $k\Omega$ |
| Current Consumption | $V_{CC}=4.4\text{V}$, $R_L = 2.2k\Omega$ | - | 260 | 500 | μA |
| Signal to Noise Ratio (SNR) | 94dB SPL at 1kHz, A-weighted | 51 | 55 | - | dB(A) |
| Maximum input S.P.L. | $f=1\text{kHz}$ | - | - | 120 | dB |
| Front to Rear Ratio | $0^\circ/180^\circ$, $f=1\text{kHz}$ | 12 | 17 | - | dB |

6. MEASUREMENT CIRCUIT



7. TYPICAL FREQUENCY RESPONSE CURVE(FAR FIELD)

Far Field Measurement Condition

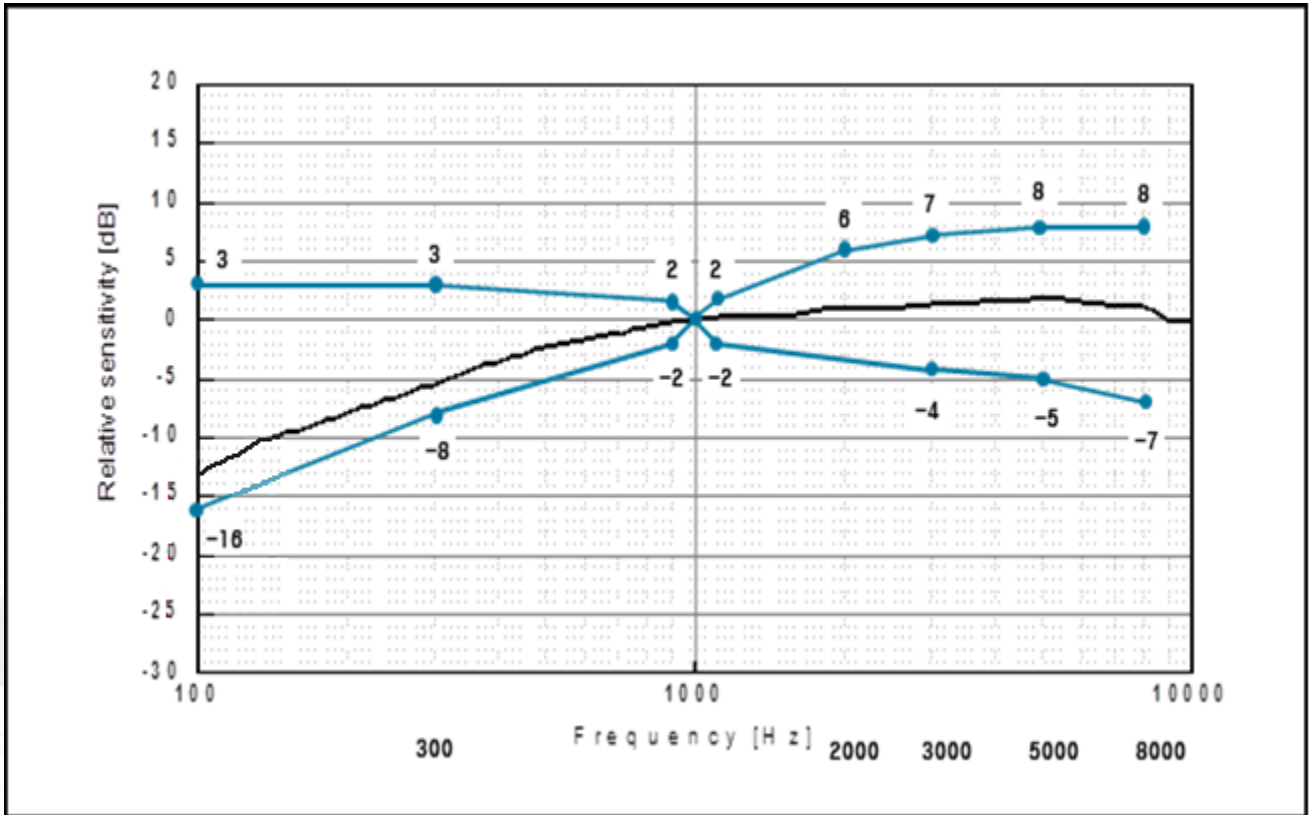
Temperature : 23 ± 2 °C

Supply Voltage : 4.4V (with 2.2kΩ series resistor)

Acoustic stimulus : 1Pa (94dB SPL at 1kHz) at 50 cm from the loud-speaker.

The loud-speaker must be calibrated to make a flat frequency response input signal.

Position : The frequency response of microphone unit measured at 50cm from the loud-speaker.



8. MECHANICAL CHARACTERISTICS

※ PCB design & Pin size can be changed by model No.

■ Lead Wire Type

